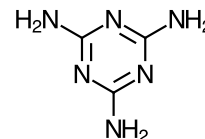


**Technical Data Sheet****CharFlam<sup>®</sup> 200-M**  
**Melamine**

CharFlam<sup>®</sup> 200-M is a micronized melamine used in intumescent flame retardant applications.

CAS Reg. Number: [108-78-1]

	<b>Typical Properties</b>
Purity	≥ 99.8%
Moisture	≤ 0.15%
pH Value	7.5 to 9.5
Ash Content	≤ 0.03%
Color (APHA)	≤ 20
Particle Size	10 to 15 microns
Turbidity (KAOLIN)	≤ 20

**Applications**

CharFlam<sup>®</sup> 200-M acts as a heat sink and contributes to the char formation in the intumescent flame retardant process. It is used in intumescent paints, coatings, and textiles.

**Packaging**

Standard Package is a 25 kg bag.

**Health and Safety**

The use of proper protective equipment is recommended. Excess exposure to the product should be avoided. Please wash thoroughly after handling. Store the product in a cool, dry, well-ventilated area, away from incompatible materials. For additional handling and toxicological information, consult the St. Louis Group Material Safety Data Sheet.

This information is believed to be an accurate and reliable representation of the products average properties and it is offered in good faith, but without guarantee and may be modified by later findings. This document does not constitute a specification. The manufacturer makes no warranties, express or implied, regarding the accuracy, completeness, or adequacy of the information contained herein. Any recommendations or suggestions are also made without warranty or guarantee, since the conditions of use are beyond our control. It is the obligation of the customer/user to make its own assessment to determine suitability of use for any purpose, including, the appropriate health, safety, disposal, and environmental precautions necessary in each products intended use(s).

**8888 Keystone Crossing, Suite 650 • Indianapolis, IN 46240 • Phone (317) 975-3121**

**[www.thestlouisgroup.com](http://www.thestlouisgroup.com)**